

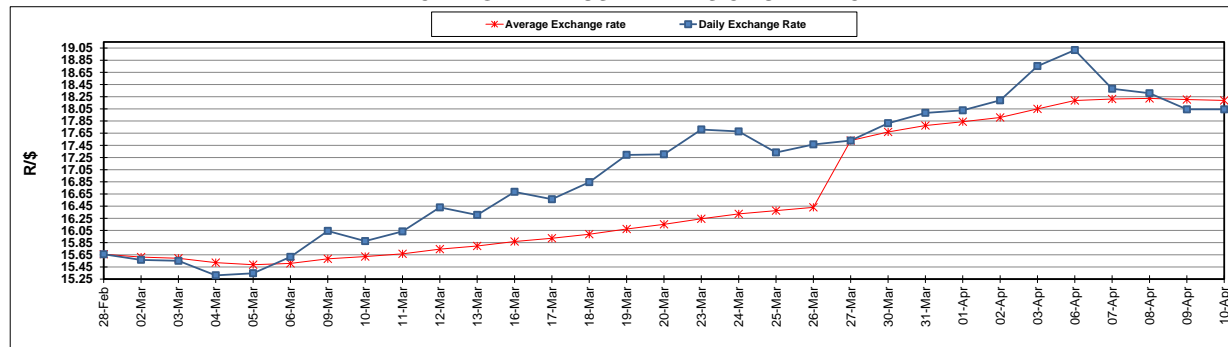
	PETROL 95 ULP	PETROL 93 ULP & LRP	DIESEL 0.05%	DIESEL 0.005%	ILL. PAR.
GAUTENG PUMP PRICE (SA c/l) AS FROM 01/04/2020	1,396.000	1,376.000	-	-	-
WHOLESALE PRICE (SA c/l) AS FROM 01/04/2020	-	-	1,269.560	1,273.960	672.828
SINGLE NATIONAL MAXIMUM RETAIL PRICE	-	-	-	-	840.000
BASIC FUEL PRICE - 10/04/2020 (SA c/l)	303.844	300.112	422.448	432.553	308.557
PRESS RELEASE CONTRIBUTION TO BFP 01/04/2020 - 10/04/2020 (SA c/l)	448.770	438.770	518.630	523.030	468.128
UNIT OVER/(UNDER) RECOVERY - 10/04/2020 (SA c/l)	144.926	138.658	96.182	90.477	159.571
AVERAGE BASIC FUEL PRICE 27/03/2020 - 10/04/2020	313.240	308.449	446.111	454.127	329.405
AVERAGE UNIT OVER/(UNDER) RECOVERY 27/03/2020 - 10/04/2020	195.312	186.830	117.519	114.176	192.723

### ANALYSIS MOVEMENT OF AVERAGE OVER/(UNDER) RECOVERY

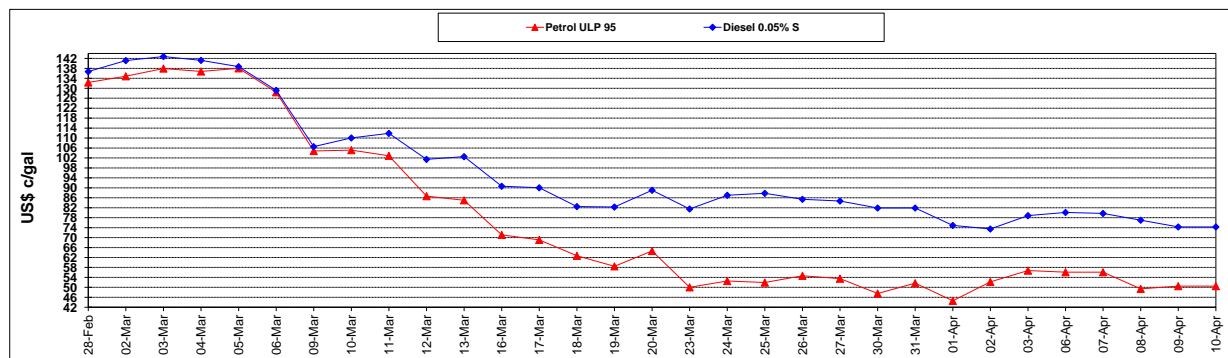
	PETROL 95	PETROL 93	DIESEL 0.05%	DIESEL 0.005%	ILL. PAR.
- MOVEMENT IN INTERNATIONAL PRODUCT PRICES	225.600	216.655	160.655	158.087	224.575
- MOVEMENT IN EXCHANGE RATE	(30.288)	(29.825)	(43.136)	(43.911)	(31.852)
AVERAGE UNIT OVER/(UNDER) RECOVERY 27/03/2020 - 10/04/2020	195.312	186.830	117.519	114.176	192.723

### R/\$ EXCHANGE RATE - (R/\$18.0420 - 10/04/2020)

#### EXCHANGE RATE USED IN BASIC FUEL PRICE



#### INTERNATIONAL PRODUCT PRICES OF BASKET USED IN BASIC FUEL PRICE



#### BASIC FUEL PRICE IN SA CENTS PER LITRE

